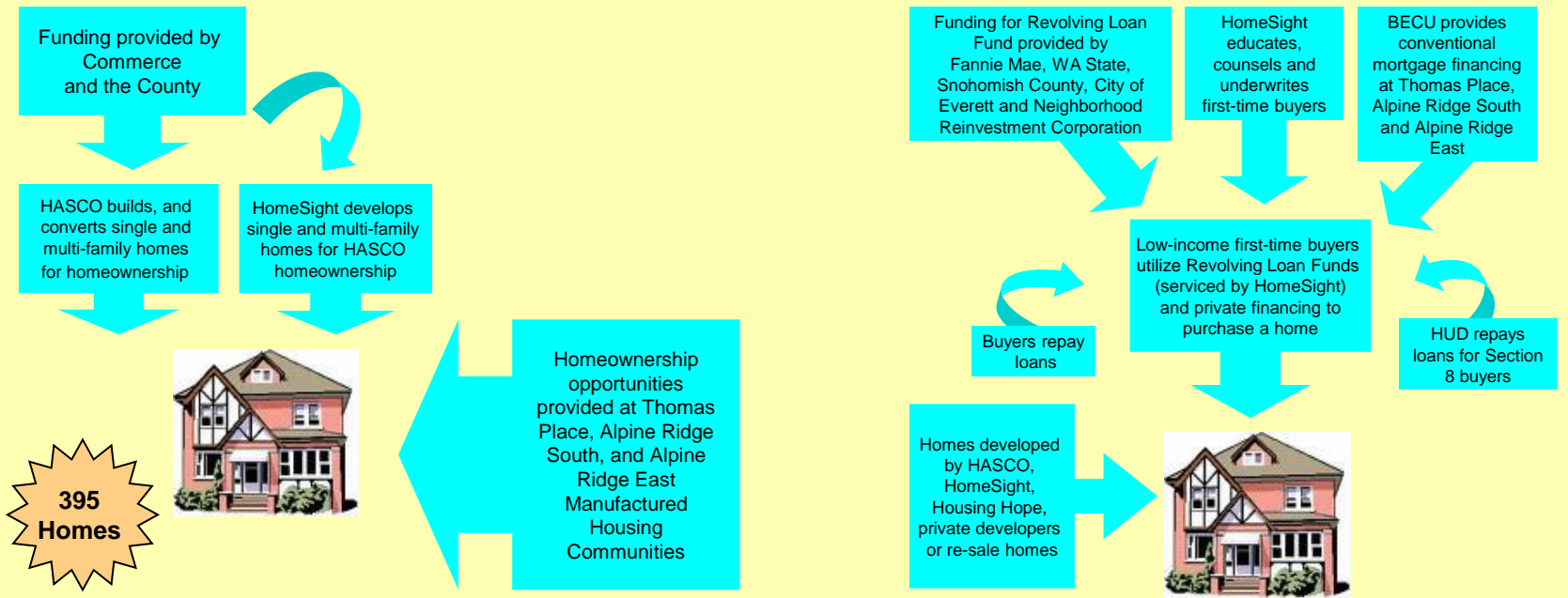




# Housing Authority of Snohomish County Housing Continuum

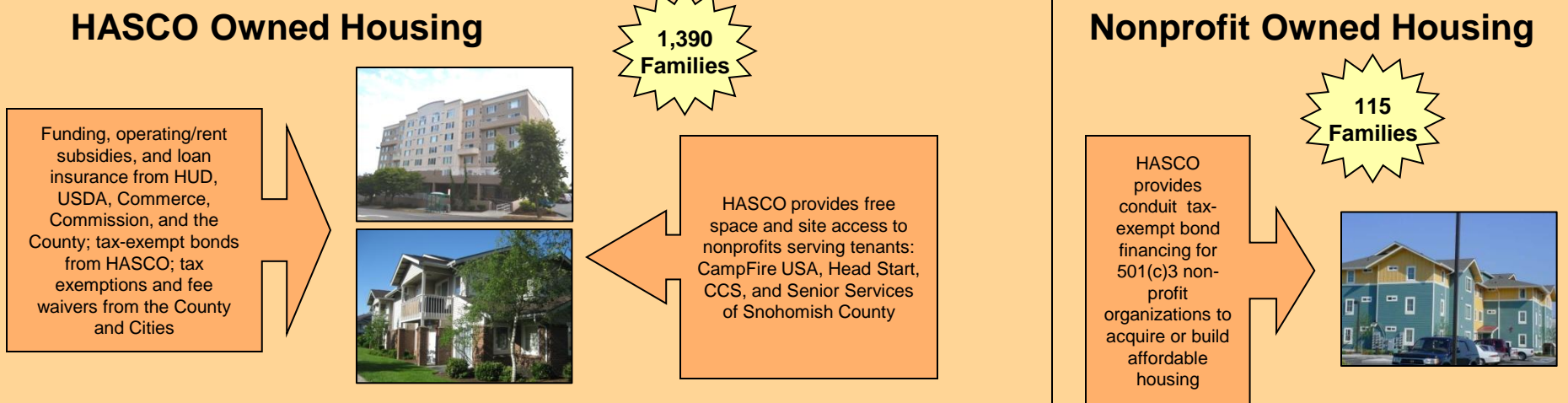
Updated 12/13/2013

## HOMEOWNERSHIP



## BELOW-MARKET RENT

29,909 households between 31% AMI and 50% AMI in the County

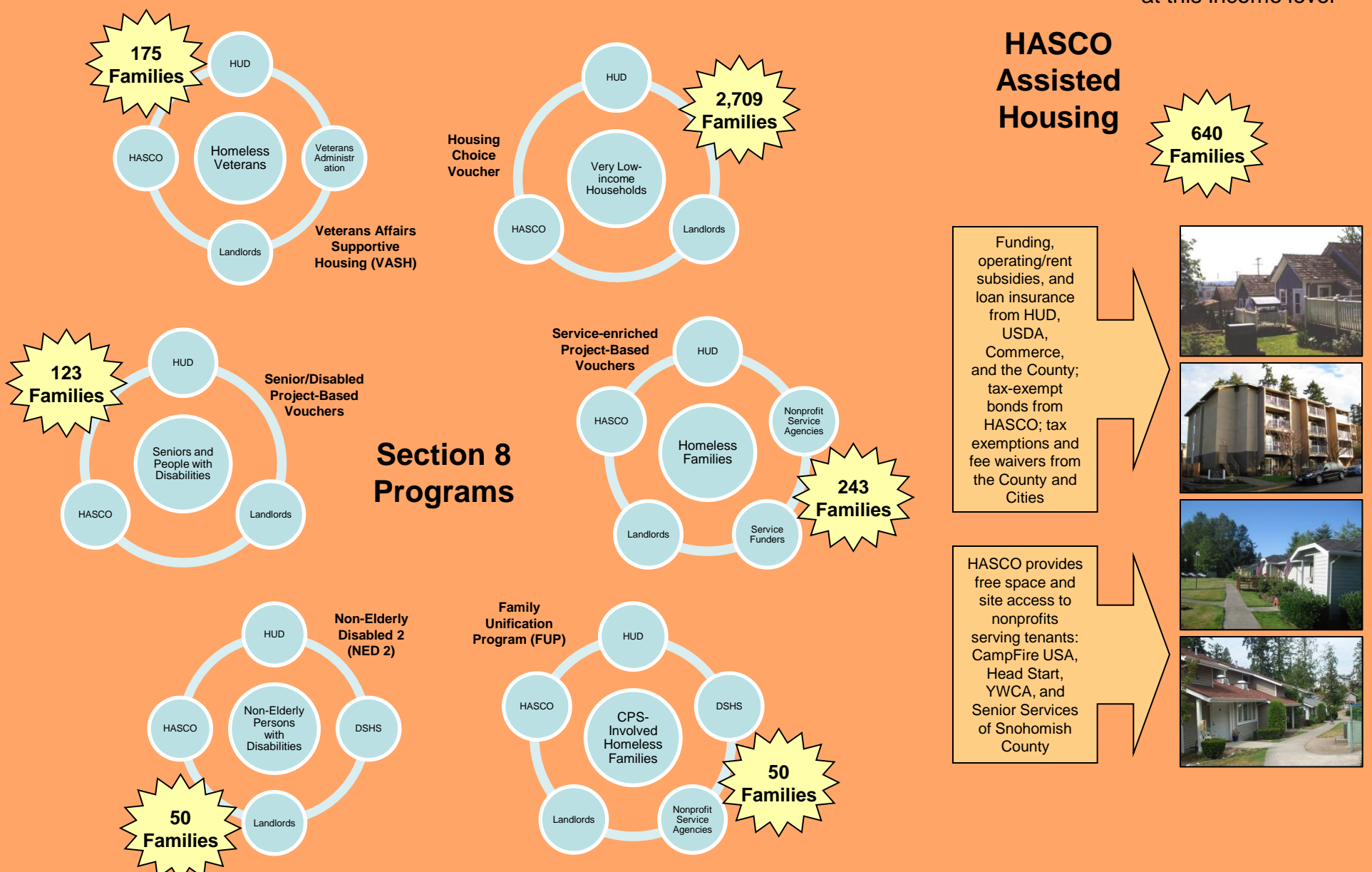


## INCOME-BASED RENT

28,394 households make at or below 30% AMI in the County

1,151 homeless households in Snohomish County

HASCO has the capacity to serve 3,880 households at this income level



## **NOTES**

### **HOMEOWNERSHIP**

#### **Homebuyers**

• Homes includes: 4 homes in Arlington, 4 homes in Kellogg Village in Marysville, 9 unit subdivision in Lynnwood, 50-unit Thomas Place, 35-unit Kokanee Creek, the 157-unit Markland Woods Condo Conversion, the 93 homes at Alpine Ridge South and East Manufactured Housing Communities, and 43 public housing units sold off, for a total of 395

### **BELOW-MARKET RENT**

Number of households between 31% and 50% AMI is based on the 2013 Housing Characteristics and Needs in Snohomish County Report using 2007 – 2011 American Community Survey data

#### **Nonprofit Rentals**

##### **Snohomish Affordable Housing Group (SAHG)**

400 First Street = 18 units

Cadyville = 43 units

Tucker Place = 21 units

Centennial Trails Senior Housing = 21 units

#### **Housing Hope**

Avondale Village = 14 units

Previously constructed with conduit financing:

Josephine Sunset Home = 55 units

### **INCOME-BASED RENT**

Number of households under 30% AMI is based on the 2013 Housing Characteristics and Needs in Snohomish County Report using 2007 – 2011 American Community Survey data

Number of homeless households comes from the 2013 Point In Time count of homeless persons